

2024



**ALUMINUM & BRASS
FOUNDRY**

**WATER SCUPPERS,
BACKPLATES &
SPILLWAYS**



ARCHITECTURAL CATALOG

CONTENTS

3

About Us

Lasts Longer than a Lifetime

4

Specifications in Material

Metal Option, Finish Option

7

Backplate & Spout Options

Flexible Manufacturing, Spouts,
Backplates, Spillways Available

43

Resource Guide

How to Order, Pairing Chart & Plumbing,
Size & Item #, Approx. Weight, Page Finder

51

Custom Designs

In-House Service, Sample Project

52

Contact Us

Quick Quote, Email or Phone, Project
Evaluation

“DETAILS MAKE
PERFECTION, AND
PERFECTION IS
NOT A DETAIL”

Leonardo Da Vinci

ABOUT US

We are a manufacturer. The water scuppers here are available, and we offer the ability to cast at time of order. It takes time to build a brand. For over 50 years, A & B Aluminum and Brass Foundry has worked with Architects and Contractors, producing commercial grade products. Our products, all aluminum and brass, are proudly made in the USA. We encourage our clients to follow their vision of a tranquil environment while adding architectural interest to their project. Customers:

- ❖ RESIDENTIAL (SINGLE/MULTI-FAMILY)
- ❖ GOVERNMENTAL / INSTITUTIONAL
- ❖ INDUSTRIAL / COMMERCIAL
- ❖ EDUCATIONAL FACILITY (COLLEGE / UNIVERSITY/ K – 12)

Because of A & B's materials, know that the metal will last longer than a lifetime.



METAL OPTION

BRASS – YELLOW (YB)



BRASS – RED (RB)



ALUMINUM – (AL)



A&B Foundry Item #PL2017 in YB, RB & AL

Black Powder Coating

Description: An industrial quality black powder coating gives a very contemporary or, on the contrary, very old environment where the water feature takes on natural tints in the sunshine and the luminosity says "more". When choosing a finish, the options to add the trending color of black widens customer options and, therefore, the general appearance of the project.

Details

ALUMINUM w/ Black Powder Coating Shown (also available in yellow and red brass material)

Country of Origin

Made in the USA



A&B Foundry Item #PL2028; Add-On, Black Powder Coating

FINISH OPTION

Nickel Plating Over Aluminum

Description: Nickel plating over aluminum for shine. Added functional benefit is it provides corrosion resistance and improves hardness of aluminum. With nickel plating, there is no oxidation (i.e., natural white patina of aluminum).

Special custom finish for modern pool designs.

Details ALUMINUM w/ Nickel
 Plating Shown

Country of Made in the USA
Origin



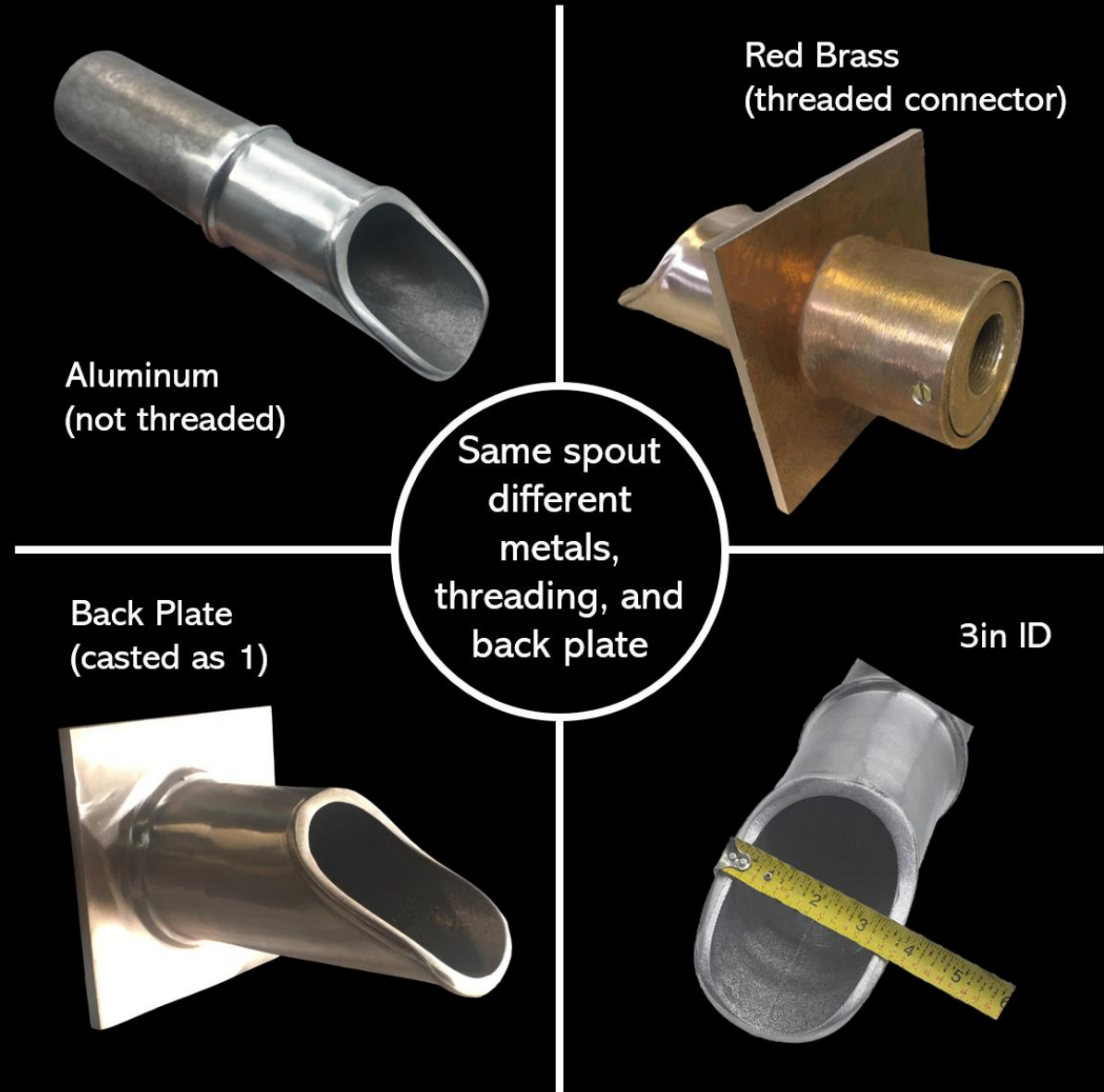
A&B Foundry Item #PL2021 with Nickel Plating

BACKPLATE & SPOUT OPTIONS

At A & B, you'll find a wide range of Water features to suit various projects. As shown, various options are available using the same scupper with or without a backplate, in different metals, and threading connectors. Here are a few important considerations to keep in mind as you browse the catalog:

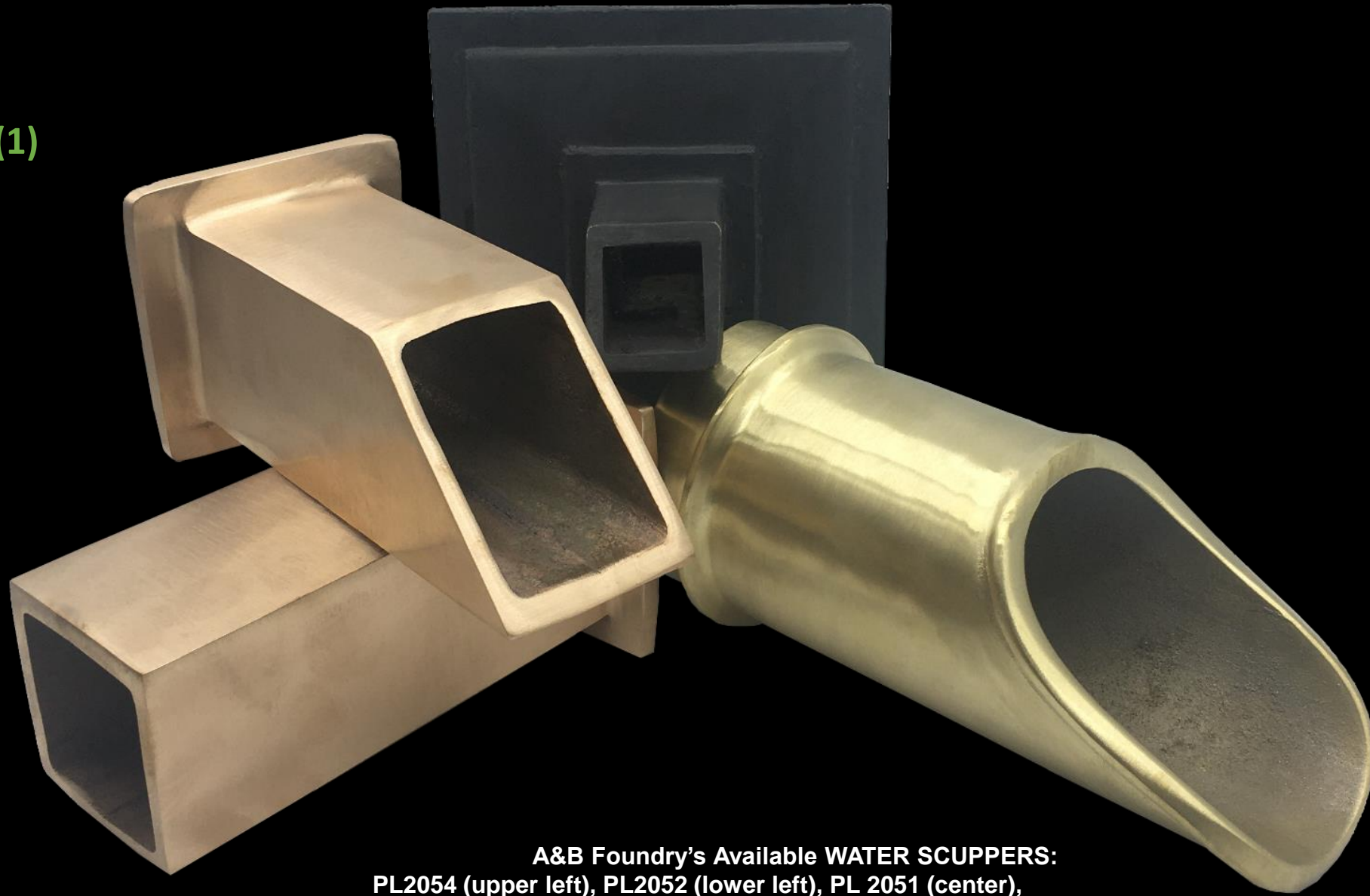
1. First consider the size, shape and style that compliments the desired aesthetic. Certain scuppers are casted as one, and certain can be paired with another.
2. Next consider the metal and finish. We can cast each in aluminum, red brass and yellow brass.

The right style and ideal choice are all important considerations in delivering that unique design for every project.



BACKPLATE & SPOUT OPTIONS

CAST AS (1)



A&B Foundry's Available WATER SCUPPERS:
PL2054 (upper left), PL2052 (lower left), PL 2051 (center),
PL2055 (lower right).

BACKPLATE & SPOUT OPTIONS

PAIRING OPTIONS

#PL2023 Spout



#PL2030 Backplate



#PL2063 Backplate



#PL2033 Backplate

Fits:

- PL2030
- PL2063
- PL2033
- PL2028
- PL2041
- PL2060
- PL2065 (pg. 18)



#PL2028 Backplate



#PL2041 Backplate



#PL2060 Backplate

BACKPLATE & SPOUT OPTIONS

PAIRING OPTIONS

#PL2027 Spout



Fits:

- PL2044
- PL2045
- PL2032



#PL2044 Backplate



#PL2045 Backplate



#PL2032 Backplate

BACKPLATE & SPOUT OPTIONS

PAIRING OPTIONS

#PL2062 Spout



Fits:

- PL2030
- PL2063
- PL2033
- PL2028
- PL2041
- PL2060
- PL2066 (pg. 19)



#PL2030 Backplate



#PL2063 Backplate



#PL2033 Backplate



#PL2028 Backplate



#PL2041 Backplate



#PL2060 Backplate

BACKPLATE & SPOUT OPTIONS

PAIRING OPTIONS

#PL2022 Spout



Fits:

- PL2030
- PL2063
- PL2033
- PL2028
- PL2041
- PL2060
- PL2065 (pg. 18)
- PL2066 (pg. 19)



#PL2030 Backplate



#PL2063 Backplate



#PL2033 Backplate



#PL2028 Backplate



#PL2041 Backplate



#PL2060 Backplate

INSPIRATION



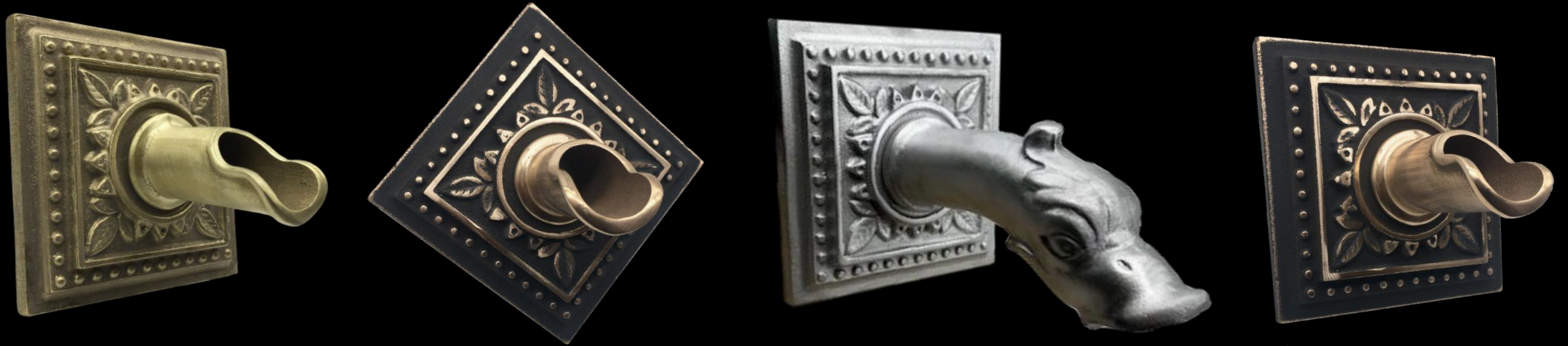
**A&B Foundry's Available WATER SCUPPERS:
PL2030 Backplate paired with Scuppers PL2062 (left), PL 2022 (center),
PL2023 (right).**

INSPIRATION



A&B Foundry's Available WATER SCUPPERS:
PL2060 Backplate paired with Scuppers PL2062 (left), PL 2022 (center),
PL2023 (right).

INSPIRATION



A&B Foundry's Available WATER SCUPPERS:
PL2041 Backplate paired with Scuppers PL 2023 (far left), PL2023 (diamond
mount with patina), PL2022, PL2023 (far right square mount with patina).

INSPIRATION



A&B Foundry's Available WATER SCUPPERS:
PL2033 Backplate paired with Scuppers PL 2022 (left), PL2023 (right).

BACKPLATE & SPOUT OPTIONS

INSPIRATION



Inspirational Spout

**A&B Foundry's Available WATER SCUPPERS:
PL2063 Backplate (ID modified to fit) paired with Scupper PL 2027.**



**A&B Foundry's Available WATER SCUPPERS:
PL2065 Backplate (wire brush finish) paired with Scuppers PL 2022 (left)
yellow brass w/ Patina, and PL2023 (right).**

INSPIRATION



**A&B Foundry's Available WATER SCUPPERS:
PL2066 Backplate paired with Scuppers PL 2062 (left) and PL2022 (right).**

BACKPLATE & SPOUT OPTIONS

**MOUNT
BACKPLATE
ONLY
OPTION**



#PL2028 Backplate



#PL2045 Backplate



#PL2058 Backplate



#PL2032 Backplate



#PL2059 Backplate



#PL2044 Backplate



PLUMBING:
PVC male adapter
part
number (if
applicable)
included in
Resource Guide,
and product install
suggestions
available at
abfoundryllc.com.

BACKPLATE & SPOUT OPTIONS

MOUNTING SPOUT ONLY OPTION



#PL2021 Spout



#PL2023 Spout



#PL2022 Spout



#PL2055 Spout



#PL2062 Spout



PLUMBING:
PVC male adapter
part
number (if
applicable)
included in
product install
suggestions
available at
abfoundryllc.com.

BACKPLATE & SPOUT OPTIONS

CLASSIC COLLECTION



Side View with Nickel Finish



A&B Foundry Item #PL2016

11-½” SQ Lion Head YB

Description: If choosing a focal point, the Lion Head brings a whole new level of aesthetics. This feature is guaranteed beauty in a small water feature of any residential or commercial landscaping design to welcome the soothing sounds of water into an environment.

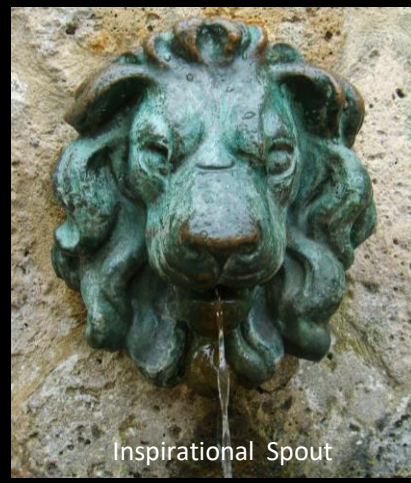
Material	METAL
Details	Aluminum with Nickel Coating Shown (available in yellow brass, red brass and aluminum)
Country of Origin	Made in the USA

BACKPLATE & SPOUT OPTIONS

CLASSIC COLLECTION



A&B Foundry Item #PL2017



Inspirational Spout

7" RD Brave Lion Head

Description: The Brave Lion and its symbol of power. Focal point as one in a small feature, or multiples for a touch of Europe in the garden. These welcome the soothing sounds of water with visual of the Brave Lion.

Material	METAL
Details	BRASS – Yellow Shown (available in red brass and aluminum)
Country of Origin	Made in the USA

CLASSIC COLLECTION



A&B Foundry Item #PL2018

9" x 6-5/8" (HxW) Majestic Lion Head

Description: For the modern feel of white stone there is the touch of the contrasting power coating in bronze available. An absolute sharpness in color that adds a touch of classis. Spectacular as one focal point or paring in group.

Material	METAL
Details	BRASS – Red Shown with coating (available in yellow brass, red brass and aluminum)
Country of Origin	Made in the USA

BACKPLATE & SPOUT OPTIONS

CLASSIC COLLECTION



Rear View



A&B Foundry Item #PL2019

7-1/8" RD Lion Head

Description: Imagine!! Mounted on a square back surrounded by masonry stonework with the water flowing into the bowl or pool below. A spectacular focal point or paring in group.

Material	METAL
Details	BRASS – Red Shown (available in yellow brass and aluminum)
Country of Origin	Made in the USA

BACKPLATE & SPOUT OPTIONS

CLASSIC COLLECTION



Diamond Mount

8-½" Four Pt. Petal, ¾" ID

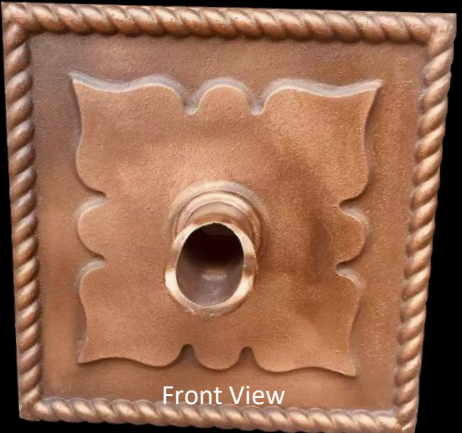
Description: If needing more aesthetic than sound of water flow, this functions perfectly. It's a practical and elegant water feature with a ¾" opening. Spectacular in groups of 3 or more.

Material	METAL
Details	BRASS – Yellow with Coating Shown (available in yellow brass, red brass and aluminum)
Country of Origin	Made in the USA

A&B Foundry Item # PL2059

BACKPLATE & SPOUT OPTIONS

CLASSIC COLLECTION



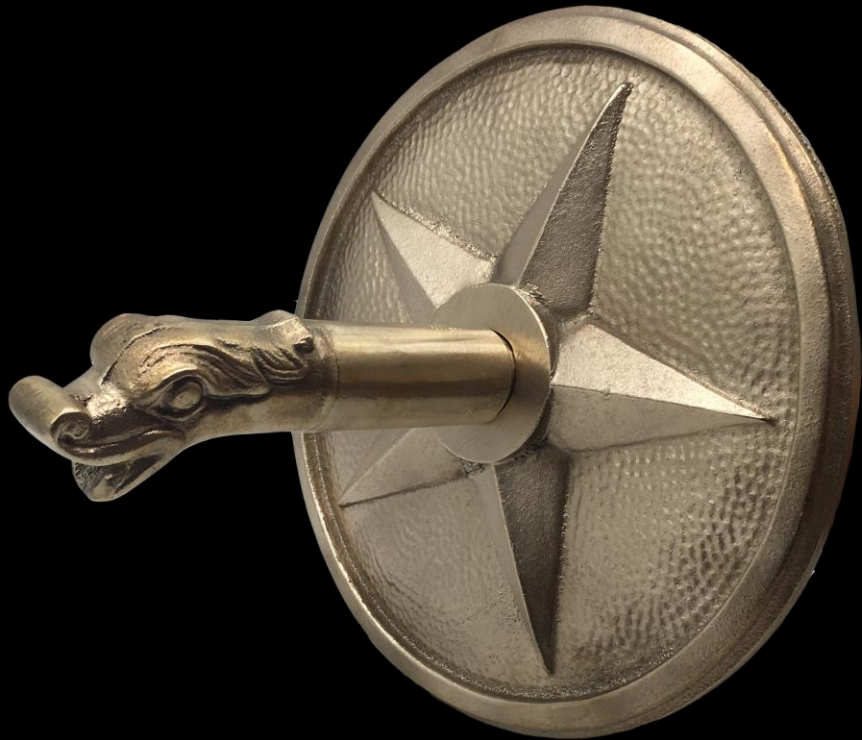
12" SQ Rope Backplate, 2" ID with 4-1/8" RD Spout (Tip to Collar start), 1-1/2" ID

Description: A much wider range of pool design is trending which requires manufacturers to widen their offers. Architects and Contractors take the time to reflect finishes that appeal to most customers and this is one. **Diamond mount casting option available.*

Material	METAL
Details	BRASS – Red Shown (available in yellow brass and aluminum)
Country of Origin	Made in the USA

A&B Foundry Item #PL2028 and PL2023

CLASSIC COLLECTION



9-1/2" RD Star with 7-3/4" Small Griffin Head, 5/8" ID

Description: In the details, we learn function. We've casted these available water scupper and backplate, as an uncommon pairing. It started as a vision but then it came to life as one the eye is drawn to. Suggested as a focal point in commercial or residential settings.

Material	METAL
Details	BRASS – Red Shown (available in red brass, yellow brass, and aluminum)
Country of Origin	Made in the USA

A&B Foundry Item #'s PL2035 and PL2027

OLD WORLD TUSCAN COLLECTION



A&B Foundry Item # PL2058

7-1/2" RD Maria, 1" ID

Description: Beautiful and intricate backplate PL2058 will elevate the detail to old world Tuscan inspiration. Placement is spectacular in masonry stonework.

Material	METAL
Details	BRASS – Yellow Shown (available in red brass and aluminum)
Country of Origin	Made in the USA

BACKPLATE & SPOUT OPTIONS

OLD WORLD TUSCAN COLLECTION



Group of 4 (Yellow Brass)



A&B Foundry Item #PL2044

6" SQ Maria, 1-1/4" ID

Description: If choosing a focal point, the Maria brings a whole new level of aesthetics. This backplate is guaranteed beauty in a small water feature in any residential or commercial landscaping design to welcome the soothing sounds of water into an environment.

Material	METAL
Details	BRASS – Red Shown (available in yellow brass and aluminum)
Country of Origin	Made in the USA

MODERN COLLECTION



Top View

2-1/4" RD Angled Collar, 1-1/2" ID

Description: When cutting tile for water features, the perfect cut is not always the result. The 1/4" collar depth on this 2-1/4" x 2-1/2" (HxW) feature alone or combined with a backplate is an installers option. Spectacular in groups of 3 or more.



A&B Foundry Item # PL2062

Material	METAL
Details	BRASS – Red Shown (available in yellow brass and aluminum)
Country of Origin	Made in the USA

MODERN COLLECTION



6-1/2" RD Spout (Tip to end), 1-1/2" ID

Description: The appearance is striking and particularly aesthetic. All the surrounding nature is enhanced by the commonly known as the 6-1/2" spout.

Material	METAL
Details	BRASS – Yellow Shown (available in red brass and aluminum)
Country of Origin	Made in the USA

A&B Foundry Item # PL2023

MODERN COLLECTION



A&B Foundry Item #PL2055

7-½" RD Spout (Tip to Collar start), 3" ID

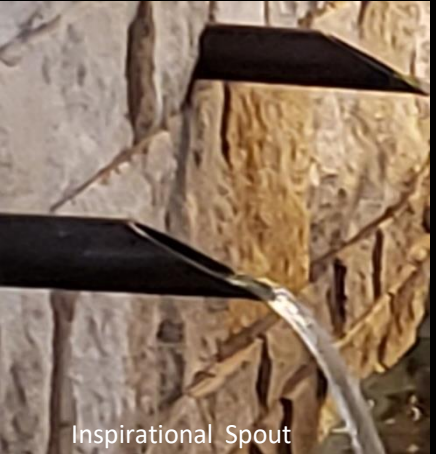
Description: Hugely popular in modern designs in groups of 3 especially to hear the sound of water moving through its huge 3" inner diameter opening!

* COMMERCIAL

Material	METAL
Details	ALUMINUM Shown (available in red and yellow brass)
Country of Origin	Made in the USA

BACKPLATE & SPOUT OPTIONS

MODERN COLLECTION



A&B Foundry Item #PL2021

12" RD Spout (No Collar), 1-1/2" ID

Description: From our modern collection, this luxury outdoor water feature is one of those architecture features that will never go out of style.

Material	METAL
Details	ALUMINUM Shown w/ nickel plating (available in red and yellow brass)
Country of Origin	Made in the USA

BACKPLATE & SPOUT OPTIONS

MODERN COLLECTION



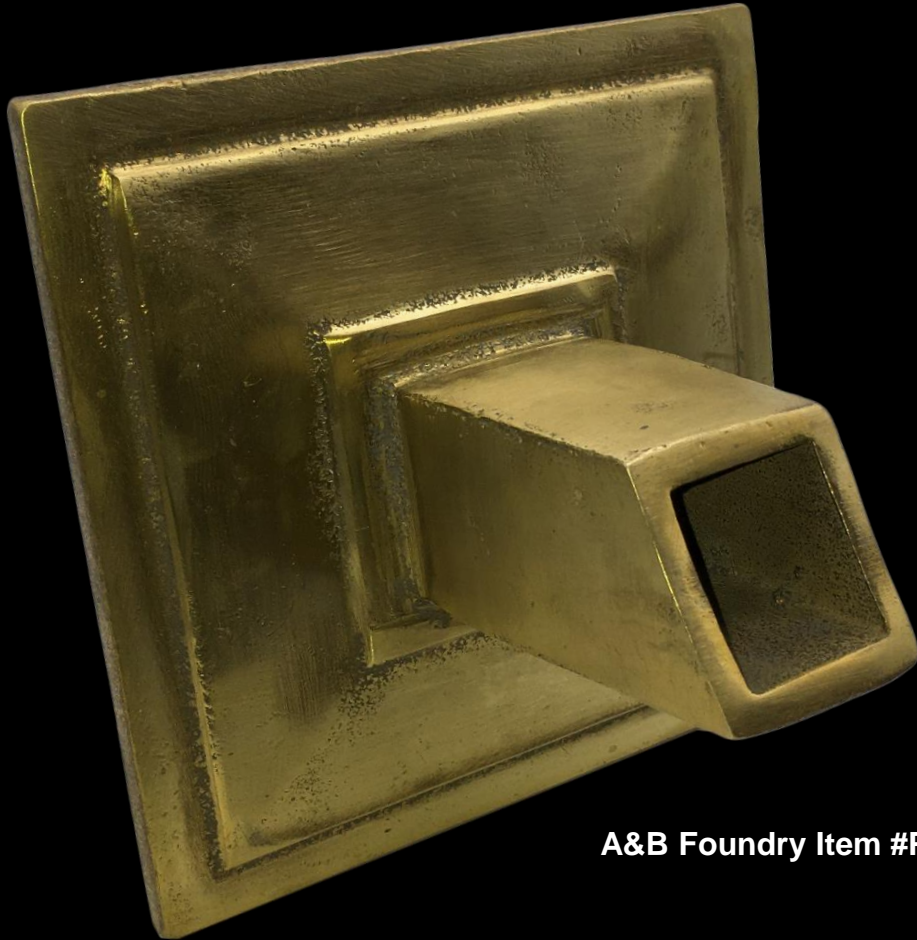
6" RD Parisian Spout (Tip to Collar start), 1-1/2" ID

Description: Spectacular in groups of 3 or more cascading into the pool. The rich aluminum or brass metal casting announces aesthetic appeal. The rounded curves are hand-polished to a high luster to showcase its beauty.

Material	METAL
Details	BRASS – Yellow Shown (available in red brass and aluminum)
Country of Origin	Made in the USA

A&B Foundry Item #PL2025

MODERN COLLECTION



A&B Foundry Item #PL2050

6" SQ Backplate w/ Spout, 1" ID

Description: Our water features last longer than a lifetime. The clean lines of this piece has a lasting impact on the world because its design is timeless.

Material	METAL
Details	BRASS – Yellow Shown (available in red brass and aluminum)
Country of Origin	Made in the USA

MODERN COLLECTION



A&B Foundry Item #PL2051

6" SQ Backplate w/ Spout, 1" ID (patina)

Description: A patina coating on brass is a special technique to give the rich brown finish many desire in a water spout. Patina is a favorite finish for indoor and outdoor water features.

Material	METAL
Details	BRASS – Red (with Patina) Shown
Country of Origin	Made in the USA

MODERN COLLECTION



A&B Foundry Item #PL2057

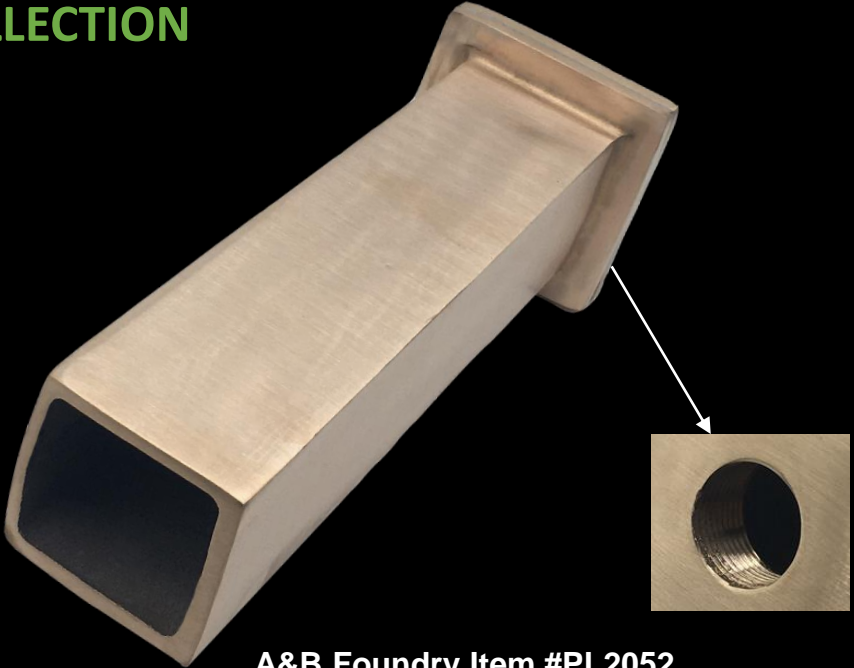
6" SQ Backplate w/ Spout, 1" ID (edge)

Description: This is a ****new finish**** created to draw the eyes with the rich darkness of the patina finish first, then secondly focus on the brilliance of the brass from its exposed edge.

Material	METAL
Details	BRASS – Yellow (with Patina, exposed edge). Red Brass with Patina finish available.
Country of Origin	Made in the USA

BACKPLATE & SPOUT OPTIONS

MODERN COLLECTION



A&B Foundry Item #PL2052

10" SQ Spout (Tip to Backplate start), 2" ID, Flat Front

Description: Done for a long time because it's done well, this design provides an architectural beauty and permanence that's so impressive. Grouped in two or more, the quality and craftsmanship enhances any fountain or pool. Available in 14" in PL2064.

Also Available:

PL2064	14" SQ Spout, 2" ID, Flat
--------	---------------------------

Material	METAL
Details	BRASS – Red Shown (available in yellow brass and aluminum)
Country of Origin	Made in the USA

MODERN COLLECTION



A&B Foundry Item #PL2053

10" SQ Spout (Tip to Backplate start), 2" ID, Angled Front

Description: The shape of the square invoke feelings of balance and stability. Four equal sides, this water feature is modernized with an angled front that elongates the visual image of the water spilling into a pool or pond. Typically grouped in two or more, they are breathtaking. Available in 6" in PL2054, and 12" in PL2056.

Also Available:

PL2054	6" SQ Spout, 2" ID, Angled
PL2056	12" SQ Spout, 2" ID, Angled

Material	METAL
Details	BRASS – Red Shown (available in yellow brass and aluminum)
Country of Origin	Made in the USA

**BACKPLATE & SPOUT
OPTIONS**

SPILLWAYS

Spillway Size	Concave / Convex	Radius
6" straight	-	-
9" straight	-	-
12" straight	-	-
12"	Convex	24"
12"	Convex	5'
12"	Concave	54"
12"	Convex	3' 6"
12"	Convex	8' 6"
18" straight	-	-
18"	Convex	18"
18"	Concave	30"
18"	Convex	30"
18"	Concave	12"
18"	Convex	4'
18"	Concave	7' 3"

CALL FOR
QUANTITY
PRICING

**BACKPLATE & SPOUT
OPTIONS**

SPILLWAYS

Spillway Size	Concave / Convex	Radius
18"	Concave	10'
18"	Concave	14' 6"
18"	Convex	15' 1"
24" straight	-	-
24"	Concave	4'
24"	Concave	7'
36" straight	-	-
36"	Convex	11'
36"	Convex	6' 6"
36"	Concave	8'
36"	Convex	14'
36"	Concave	14'
48" straight	-	-
60" straight	-	-
72" straight	-	-

CALL FOR
QUANTITY
PRICING

HOW TO ORDER

1

Please browse catalog to know breath and depth of water scupper design options. Choose the spout and backplate pairing or cast as one feature

2

Request a quote at sales@abfoundryllc.com.

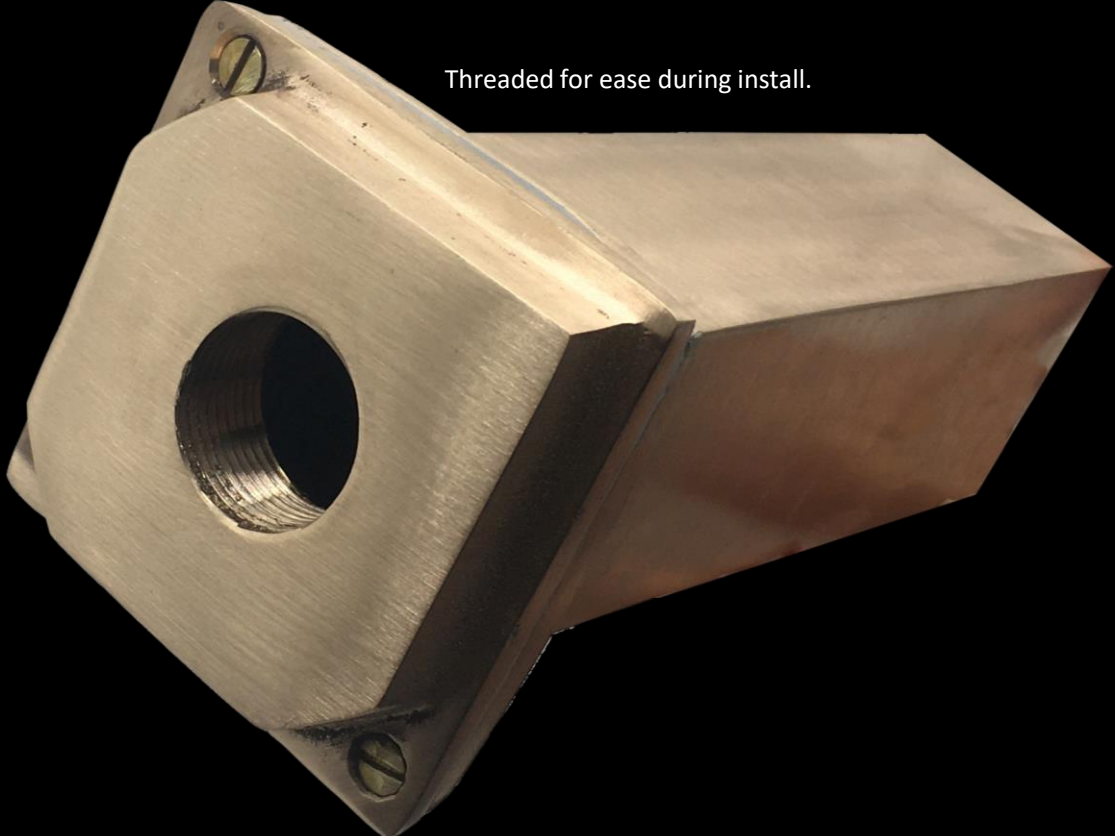
3

When ready, place your order to meet project install delivery timeline.

4

Enjoy!

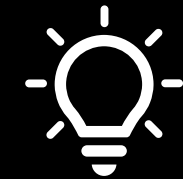
TEAM A & B



Threaded for ease during install.

PAIRING OPTIONS

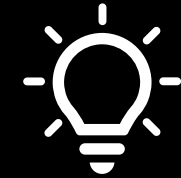
Item #	Spout Category	Backplate Category	Feature Cast as Spout/Backplate in (1)	Plumbing Connect
PL2016			X	Varies
PL2017			X	Varies
PL2018			X	Varies
PL2019			X	Varies
PL2021	X			PVC
PL2022	X			1-1/4" thread w/ 1-1/2" pipe size
PL2023	X			1-1/4" thread w/ 1-1/2" pipe size
PL2025			X	1-1/2" thread w/ 1-1/2" pipe size
PL2027	X			PVC or Spout
PL2028		X		PVC or Spout – 2" ID



PLUMBING: Based on existing plumbing PVC male adapter part number listed (if applicable). See product install suggestions at abfoundryllc.com.

PAIRING OPTIONS

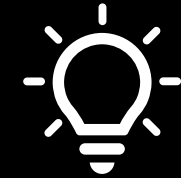
Item #	Spout Category	Backplate Category	Feature Cast as Spout/Backplate in (1)	Plumbing Connect
PL2030		X		PVC or Spout – 2-1/8" ID
PL2032		X		PVC or Spout – 1-1/4" ID
PL2033		X		PVC or Spout – 2" ID
PL2041		X		PVC or Spout – 2" ID
PL2044		X		1" x 3/4" Adapter or (2) male-thread ends 1-1/4"x 3" Nipple
PL2045		X		1" x 3/4" Adapter or (2) male-thread ends 1-1/4" x 3" Nipple



PLUMBING: Based on existing plumbing PVC male adapter part number listed (if applicable). See product install suggestions at abfoundryllc.com.

PAIRING OPTIONS

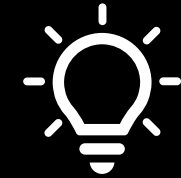
Item #	Spout Category	Backplate Category	Feature Cast as Spout/Backplate in (1)	Plumbing Connect
PL2050			X	PVC
PL2051			X	PVC
PL2052			X	1" x 3/4" Adapter
PL2053			X	1" x 3/4" Adapter
PL2054			X	1" x 3/4" Adapter
PL2055	X			PVC
PL2056			X	1" x 3/4" Adapter
PL2057			X	PVC
PL2058		X		PVC
PL2059		X		3/4" thread w/ 3/4" pipe size
PL2060		X		PVC or Spout – 2" ID



PLUMBING: Based on existing plumbing PVC male adapter part number listed (if applicable). See product install suggestions at abfoundryllc.com.

PAIRING OPTIONS

Item #	Spout Category	Backplate Category	Feature Cast as Spout/Backplate in (1)	Plumbing Connect
PL2062	X			1-1/4" thread w/ 1-1/2" pipe size
PL2063		X		PVC or Spout – 2"ID
PL2064			X	1" x 3/4" Adapter
PL2065		X		PVC or Spout – 2"ID
PL2066		X		PVC or Spout – 2"ID



PLUMBING: Based on existing plumbing PVC male adapter part number listed (if applicable). See product install suggestions at abfoundryllc.com.

RESOURCE GUIDE

SQ = Square
RD = Round

SIZE, ITEM#

Size	Item #	Description	LBS~ AL	LBS~ YB	LBS~ RB	Product Finder
11-1/2"	PL2016	11-1/2" SQ Lion Head	9.4	29.3	30.1	22, Cover
7"	PL2017	7" RD Brave Lion Head	1.3	4.0	4.1	4,23
9"	PL2018	9"x 6-5/8" (HxW) Majestic Lion Head	1.9	6.0	6.2	24
7-1/8"	PL2019	7-1/8" RD Lion Head	1.1	3.4	3.5	25
12"	PL2021	12" RD Spout (No Collar), 1-1/2" ID	1.6	4.6	5.0	6,21,34
7-3/4"	PL2022	7-3/4" Large Griffin Head (Tip to Collar start), 1-1/2" ID	1.4	4.3	4.4	12,13,14,15,16,18,19,21
6-1/2"	PL2023	6-1/2"RD Spout (Tip to end), 1-1/2" ID	.4	1.4	1.6	9,13,14,15,16,18,21,27,32
6"	PL2025	6" RD Parisian Spout (Tip to Collar start), 1-1/2" ID	2.2	6.8	7.0	35
7-3/4"	PL2027	7-3/4"Small Griffin Head, 5/8" ID	.5	1.6		10,17,28
12"	PL2028	12" SQ Rope Backplate, 2" ID	5.3	17	18.8	5,9,11,12,20,27
13 1/2"	PL2030	11" x 13 1/2" (HxW) Floral Oval, 2-1/8" ID	5.7	17.3	17.8	9,11,12,13
12"	PL2032	12" RD Cameron, 1-1/4"ID	4.4	13.7	14.1	10,20

SQ = Square
RD = Round

SIZE, ITEM#

Size	Item #	Description	LBS~ AL	LBS~ YB	LBS~ RB	Product Finder
10"	PL2033	10" RD Ramita Floral, 2" ID	3.0	9.3	9.6	9,11,12,16
7-1/8"	PL2041	7-1/8" SQ Jackson, 2" ID	2.9	8.8	8.9	9,11,12,15
6"	PL2044	6" SQ Maria, 1-1/4" ID	2.6	7.9	8.2	10,20,30
7"	PL2045	7" RD Carolyn, 1-1/4" ID	1.5	4.4	4.6	10,20
6"	PL2050	6" SQ Backplate w/ Spout, 1" ID	1.6	5.4	5.8	36
6"	PL2051	6" SQ Backplate w/ Spout, 1" ID (patina)	1.6	5.4	5.8	8,37
10"	PL2052	10" SQ Spout (Tip to Backplate start), 2" ID, Flat Front	2.6	8.0	8.4	8,39
10"	PL2053	10" SQ Spout (Tip to Backplate start), 2" ID, Angled Front	2.4	7.8	8.2	40
6"	PL2054	6" SQ Spout (Tip to Backplate start), 2" ID, Angled Front	2.4	7.8	8.2	8,40
7-1/2"	PL2055	7-1/2" RD Spout (Tip to Collar start), 3" ID	2.8	10.2	10.6	7,8,21,33
12"	PL2056	12" SQ Spout (Tip to Backplate start), 2" ID Angled Front	2.4	7.8	8.2	40
6"	PL2057	6" SQ Backplate w/ Spout, 1" ID (edge)	1.6	5.2	5.3	38

RESOURCE GUIDE

SQ = Square
RD = Round

SIZE, ITEM#

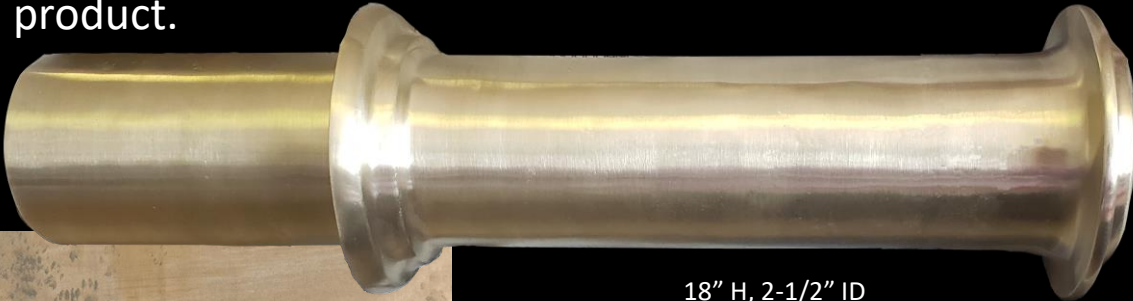
Size	Item #	Description	LBS~ AL	LBS~ YB	LBS~ RB	Product Finder
7-1/2"	PL2058	7-1/2" RD Maria, 1" ID	1.0	3.3	3.4	20,29
8-1/2"	PL2059	8-1/2" Four Pt. Petal, 3/4" ID	1.4	4.4	4.5	20,26
6"	PL2060	6" Reign Backplate, 2" ID	1.5	4.4	4.6	9,11,12, 14
2-1/4"	PL2062	2-1/4"x 2-1/2" (HxW) RD Angled Collar, 1-5/8" ID	.3	.7	.8	11,13,14, 21,31
7-1/4"	PL2063	7-1/4"RD Nora, 2" ID	1.4	4.8	4.9	9,11,12,17
14"	PL2064	14" SQ Spout (Tip to Backplate start), 2" ID Flat Front	2.6	8.0	8.4	39
6-3/4"	PL2065	6-3/4"RD Flower, 2" ID	1.8	5.8	5.9	18
6"	PL2066	6" RD Petal, 2" ID	.5	1.0	1.6	19
-	-	Spillways	-	-	-	41,42

~ = lbs. nominal relative to shrinkage.

CUSTOM DESIGNS

A & B creates beautiful and intricate custom WATER SCUPPERS, backplates, and spillways for municipalities, corporations, residential/commercial landscapers, and pool builders. Our sand-casting process allows us the ability to deliver the feature. The pattern set-up fee and design is a one-time charge.

Shown is a commercial feature in the pattern, and casted product.



18" H, 2-1/2" ID
* COMMERCIAL



CONTACT US

Quick Quote:

<https://www.abfoundryllc.com/free-concept-evaluation-quote.html>

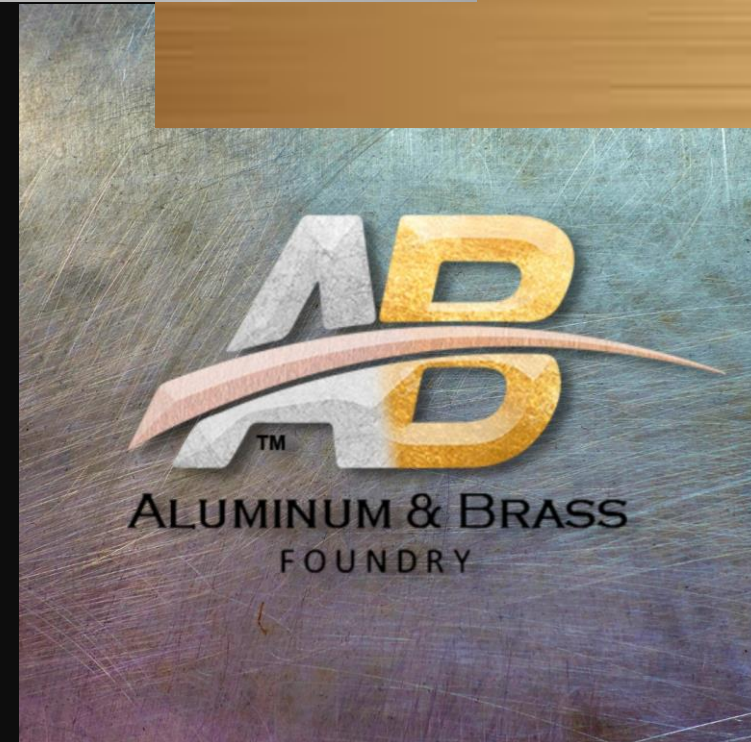
Email: <https://www.abfoundryllc.com/contact-us.html>

Call: (972) 247-3579

Send Project Evaluation:

Website will permit upload of .doc, .pdf, .jpeg, .gif, and .xls. Anything other than these files can be emailed to sales@abfoundryllc.com.

We will respond within one business day.



Metal Casting Since: 1965

**11165 Denton Dr.
Dallas, Texas 75229**